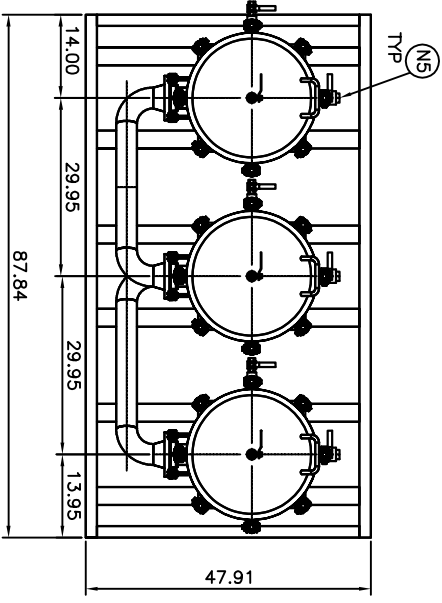


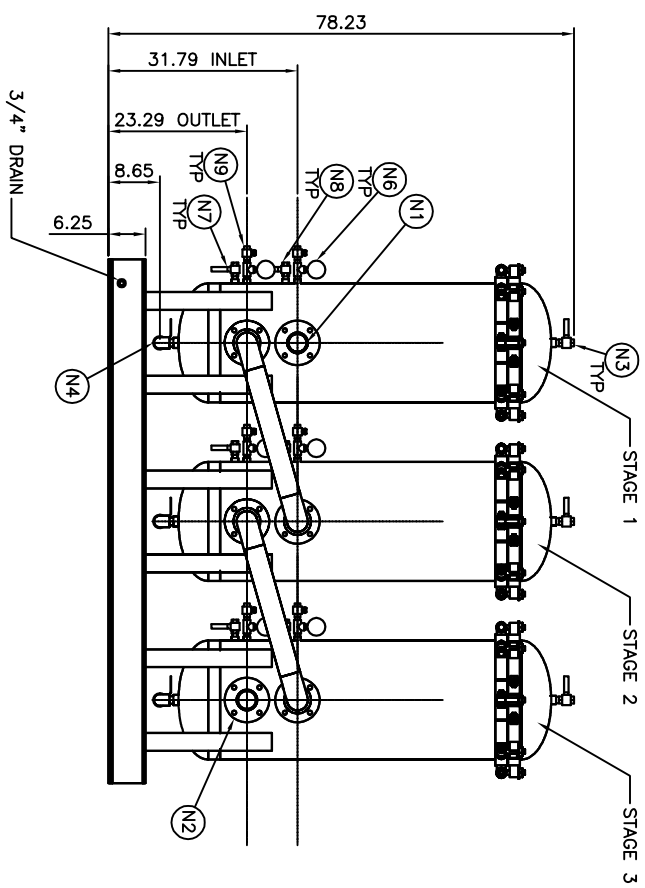
DESIGN DATA		
DESIGN PRESSURE	149 PSIG	
MIN./MAX. DESIGN TEMP.	40F-100F (70° IDEAL)	
VESSEL OPENING SCHEDULE		
MK. NO.	SIZE	TYPE
N1	*	INLET
N2	*	OUTLET
N3	3/4"	FNPT VENT
N4	1"	FNPT CLEAN DRAIN
N5	1"	FNPT DIRTY DRAIN
N6/N7	1/2"	FNPT DRI
N8/N9	1/2"	FNPT TEST PT.

\* PER MODEL CODE CHART

REPLACEMENT CARTRIDGE		
STAGE	PART NUMBER	QTY.
1	BCC39QPRE	3
2	BCC39QPOL	3
3	BCC39QPOL	3



MODEL NUMBER					
BOX 1 MODEL CODE BCC900	BOX 2 SEALS V=VITON	BOX 3 INLET PORTING P32=2" NPT ANSI 150# FLANGE	BOX 4 OUTLET PORTING P32=2" NPT ANSI 150# FLANGE	BOX 5 STAGE 1 INDICATOR OMIT=NONE RDS=VISUAL POP-UP DPG1=DIFFERENTIAL PRESSURE GAUGE RMS10=ELECTRICAL W/DIN CONNECTOR (MALE END ONLY)	BOX 6 TEST POINTS OMIT=NONE UU=TEST POINTS IN EACH STAGE



**PRELIMINARY**  
ALL DIMENSIONS SHOWN MAY CHANGE PENDING FINAL DESIGN. IF DIMENSIONS SHOWN MUST BE HELD WITHIN A CERTAIN TOLERANCE, PLEASE INFORM SCHRÖDER INDUSTRIES LLC FOR APPROVAL.

- NOTES:
- 1.) INLET/OUTLET FLANGE BOLT HOLES SHALL STRADDLE NORMAL VESSEL CENTERLINES UNLESS NOTED.
  - 2.) COATING:
    - INTERNAL: NONE
    - EXTERNAL: STAGE 1 - IMRON GREEN
    - S.I. SPEC. #144, 145, 146
    - STAGE 2 - IMRON BLACK
    - S.I. SPEC. TBD
  - 3.) HOUSING WILL ACCOMMODATE CARTRIDGE PER REPLACEMENT CHART.
  - 4.) ESTIMATED EMPTY WEIGHT: 2000 LBS.

MATERIAL:		DES. TOLERANCES (ALL DIMENSIONS IN INCHES) (SEE CARB. 11026)	
2	PL-1	ASPT	FAN/LL ENDS ±.03
3	PL-1	CRN	FAN/LL ENDS ±.03
ANG.	±	DMN	A-BOST 1±.04

REG. CARB. 11026  
REV. DATE 10/09/09  
SALES DRAWING  
OF  
BCC900 SKID

INDUSTRIES, LLC		REV. 1 DRAWING NO.	
1	D-11094	1	D-11094
www.schroderindustries.com		SCALE: .93=1 SH. 1 OF 1	